

USER GUIDE



belle[®]
series **W**

HOW TO CHARGE BELLE

IMPORTANT: Fully charge Belle before first use and when the red battery light is flashing while off the cradle to ensure the device can function properly.

Plug in the charging cradle and place Belle into the cradle as shown. Belle will state "Charging".

Typical charging time is 2-3 hours. The red battery light flashes every 5 seconds while charging and is solid red when Belle is fully charged.

NOTE: Battery life will vary based on settings selected by your dealer. Please contact your dealer with any questions. Only charge as needed. Wear your device as often as possible to be protected. If the battery is low, the device will state, "Battery low, please charge" or "Call failed, battery low" when you press the call button. It will then power off.

HOW TO CHARGE BELLE

1

Locate the gold charging pins on the back of your Belle W device.

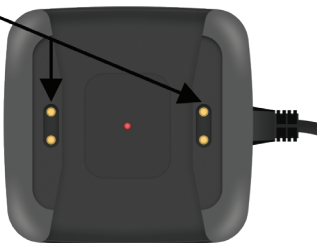
Charging Pins



2

Plug in the charging cradle and wait for a red light to turn on.

Line up the gold pins on the Belle W with either set of gold pins on the charging cradle.



3

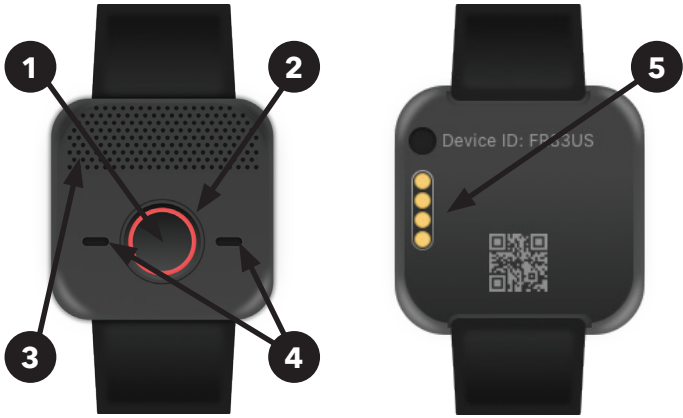
Place the device on the cradle and wait for an audible "charging" message.

When the Belle W device is charging, the red light will flash every 5 seconds.



MEET YOUR BELLE W

1. Call Button
2. Blue Call Light / Red Battery Light
3. Speaker
4. Microphones
5. Charging Pins



Red battery light around call button

- While charging, the red battery light will flash every 5 seconds until the device is fully charged.
- Once fully charged, the red battery light will be solid.
- If the battery is low, the red battery light will slowly flash when off the charging cradle.

Blue connection light around call button

- During an SOS call, the blue light will be solid.
- The blue light will also flash every 5 seconds while charging.
- The light may flash blue every 26 seconds when off the cradle, depending on operating mode.
- If the blue light flashes every 1 second, or if it double flashes, please contact your dealer for support.

HOW TO CALL FOR HELP

1. Press and hold the call button and count 1, 2, 3, or until the light around the call button on Belle® turns blue, then release the button.
2. After a short delay, you will hear a voice message and then tones or ringing.
3. The specialist will answer the call.
4. The specialist can send emergency personnel or loved ones to help you.

*** If your Belle does not connect properly, please contact your dealer immediately.**

TESTING BELLE WEEKLY

We recommend that you test Belle weekly.

1. To test, press and hold the call button and count 1, 2, 3, or until the light turns blue, then release the button.
2. After a short delay, you will hear a voice message and then tones or ringing.
3. The specialist will answer the call.
4. Tell the specialist you are testing.

*** If your Belle does not test properly, please contact your dealer immediately.**

REPLACE WRISTBAND

1. Turn Belle W over and locate the small silver quick release pins on each wrist strap.
2. To remove the existing wrist straps, slide the quick release pin toward the center of the device and pivot the strap away from the device.
3. To put the new wrist strap on the device, insert one side of the horizontal bar on the new band into the device, and then slide the quick release pin toward the center of the device.
4. Pivot the strap into the device, sliding the quick release pin back into position once the strap is firmly in the device.

**Quick Release
Pin**



CLEANING BELLE WEEKLY

We recommend that you clean Belle weekly to ensure proper charging.

Take a soft cloth, such as an eyeglass cleaning cloth, and gently rub the gold contacts on the device and charging cradle to remove dirt, oil and debris.

You can also spray household cleaner onto the cleaning cloth (though do not spray directly onto the device or cradle) to remove debris.

Example of a Belle W customer cleaning the gold charging contacts on the bottom of the Belle W.



Example of a Belle W customer cleaning the speaker holes on the top of the Belle W.



BY USING THIS DEVICE, YOU ACKNOWLEDGE

Coverage:

This product requires adequate cellular coverage to work properly. It is important to test the device to know if it works in your area. Remember that your environmental and topographical conditions may also affect your coverage. If you experience coverage issues, please contact your dealer immediately.

Charging:

Battery life will vary based on settings selected by your dealer. Please contact your dealer with any questions. Wear your device at all times and only charge when necessary. Failure to follow charging procedures will result in the device not being able to function properly.

Water-Resistant:

Belle® is IP67 water-resistant. Belle should not be submerged. Belle should be towel-dried after exposure to water.

Pacemakers:

Individuals with pacemakers should consult their physician and review their pacemaker materials regarding interaction with cell phones, and take the same precautions the materials recommend for this device.

AND ACCEPT THE FOLLOWING INFORMATION.

Location-Based Services:

Some of the Equipment uses technology to permit third-parties, including the Monitoring Center, to determine where you are physically located at any given time (the "Location Based Services"). Location Based Services may work even if you are not in communication with the Monitoring Center. The accuracy of the Location Based Services is limited, and the Company, the Operators, the Monitoring Center, the Responders, or others may not be able to identify your location or the location of the Equipment precisely or at all. You authorize the Company to collect location-based information. We will only share your location-based information with the Operators, the Monitoring Center, the Responders, any person or entity that acquires the Company and/or the Company's interest in and to the Monitoring Services, or any other person or entity you specifically designate and only for the purpose of providing and improving the Monitoring Services.

ANY AND ALL LOCATION-BASED INFORMATION IS MADE AVAILABLE FOR INFORMATIONAL AND PLANNING PURPOSES ONLY AND IS NOT INTENDED TO BE RELIED UPON IN SITUATIONS WHERE PRECISE LOCATION INFORMATION IS NEEDED OR WHERE ERRONEOUS, INACCURATE, TIME-DELAYED OR INCOMPLETE LOCATION OR MAP DATA MAY LEAD TO DEATH, PERSONAL INJURY, OR PROPERTY OR ENVIRONMENTAL DAMAGE. YOU AGREE THAT LOCATION-BASED INFORMATION MAY VARY FROM ACTUAL LOCATION(S), ROAD, OR TERRAIN CONDITIONS DUE TO FACTORS THAT CAN AFFECT THE ACCURACY OF THE MAP DATA, SUCH AS, BUT NOT LIMITED TO, WEATHER, ROAD, AND TRAFFIC CONDITIONS, GEOPOLITICAL EVENTS, AND CONDITION OR STATUS OF YOUR CELLULAR PHONE OR CELLULAR SERVICES. WE DO NOT GUARANTEE ACCURACY OR COMPLETENESS OF ANY LOCATION-BASED INFORMATION.

FCC

This device complies with part 15 of the FCC Rules.

Operation is subject to the following two conditions: (1)

This device may not cause harmful interference, and (2) this device must accept any interference received, including interference that may cause undesired operation. Changes or modifications not expressly approved by the party responsible for compliance could void the user's authority to operate the equipment. This equipment has been tested and found to comply with the limits for a Class B digital device, pursuant to part 15 of the FCC Rules. These limits are designed to provide reasonable protection against harmful interference in a residential installation. This equipment generates, uses and can radiate radio frequency energy and, if not installed and used in accordance with the instructions, may cause harmful interference to radio communications. However, there is no guarantee that interference will not occur in a particular installation. If this equipment does cause harmful interference to radio or television reception, which can be determined by turning the equipment off and on, the user is encouraged to try to correct the interference by one or more of the following measures: –Reorient or relocate the receiving antenna.

–Increase the separation between the equipment and receiver.

–Connect the equipment into an outlet on a circuit different from that to which the receiver is connected.

–Consult the dealer or an experienced radio/TV technician for help.

IC

This device contains licence-exempt transmitter(s)/ receiver(s) that comply with Innovation, Science and Economic Development Canada's licence-exempt RSS(s).

Operation is subject to the following two conditions:

1. This device may not cause interference.
2. This device must accept any interference, including interference that may cause undesired operation of the device.

Cet appareil contient des metteurs / r cepteurs exempt s de licence conformes aux RSS (RSS) d'Innovation, Sciences et D veloppement conomique Canada. Le fonctionnement est soumis aux deux conditions suivantes:

1. Cet appareil ne doit pas causer d'interf rences.
2. Cet appareil doit accepter toutes les interf rences, y compris celles susceptibles de provoquer un fonctionnement ind sirable.

CAN ICES-3(B)/NMB-3(B)

Manufacturer:

Freeus, LLC

www.freeus.com